



DMMET GROUP®

Advanced Polyurethane Machine



***DPM
SERIES***

DPM 500

DPM 1000

DPM 1500

DPM 2000

DPM 2500



FACTORY

1



FACTORY

2



FACTORY

3

DMMET GROUP

Dmmet Group started its journey in 1995 with Trapezoidal Sheet Roll Forming Machine, Cut to Length Line, Metal Tile Roof Roll Forming Machine, PUR-PIR Sandwich Panel Line and nowadays Polyurethane High Pressure Dosing Machine. From the first day we started our journey we have been working with our stakeholders hardly to deliver the best service and products to our customers.

We have approached to problems always like a solution partner by adopting customer satisfaction. In order to solve our customers' problems in the most appropriate way and to deliver the best services to our customers we continue our works by searching for the best always.

We have built our relationships on the basis of trust rather than business. As in our journey of 20 years we promise that we will continue providing added value to our customers, employees, industry and society in the upcoming periods. I would like to thank our customers, employees and business partners.

CUSTOMER CARE



TECHNICAL SUPPORT

In case of any malfunction or error that may occur in the machine that requires intervention, our technical team intervenes as soon as possible. User manuals containing sufficient information about the use of our machines or lines are supplied to the customer.

REMOTE ACCESS

Thanks to Remote Access, our experienced personnel can access the equipment remotely and troubleshoot or diagnose problems. In case of any malfunction or error in the machines, technical support is provided as soon as possible by our equipped personnel via remote access.

INSTALLATION MACHINERY AND PLANT

The installation, commissioning and preparation of our machines and plants, which are completely our own production, are completed at the customer's production facilities by our well-equipped personnel. Necessary trainings on the use of these machines and plants are also provided.

SUPPLY OF SPARE PARTS

Depending on the use of the machine, the equipment that has completed its useful life over time is always provided by our company as spare parts.

APPLICATION AREAS

CONSTRUCTION



It can be used as roof and wall materials especially in buildings. It can provide insulation very successfully in terms of heat, sound and water. These materials, which also have a certain amount of load-lifting resistance, are highly resistant to impacts.

REFRIGERATION



These are polyurethane systems consisting of polyol and isocyanate used for heat insulation in refrigerators. Commercial type deep freezer, mini bar and soft drink cabinets etc. products are polyurethane systems used for insulation purposes.

FURNISHING



Sponge systems can be used with all kinds of molds thanks to their high fluidity during application. They are polyurethane systems, which are generally used in the furniture and wood industry, which provide the advantage of using decoratively.

PIPE INSULATION



They are polyurethane systems used in the insulation of pipes in the transfer of district heating-cooling, underground and aboveground steam transfers, geothermal energy, liquefied gases (LNG, LPG, etc.), fire lines, crude oil and all chemical flows.

AUTOMOTIVE



It has high tear strength and soft cell structure; It can be applied in different densities and hardness in automotive, office furniture and medical sectors. Its usage areas are in the production of office chair armrests, automobile steering wheel, door handles, seating groups in the automotive and construction machinery sector and similar applications. It can be applied on vacuum leather as well as with polyester or aluminum molds.

TECHNICAL ITEMS



These types of polyurethane used in the production of technical items are a type of polymer that is famous for its high elongation and tensile strength, resistance to oils, solvents, chemicals and abrasions. Thanks to these characteristic features, it has a wide market and application area.

HIGH PRESSURE DOSING MACHINE



www.polyurethanefoammachine.com

We produce high pressure dosing machines used for all polyurethane foam applications. We also produce hydraulic presses for sandwich panel production, complete lines for pentane used applications and flexible foam lines.

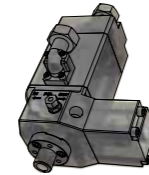
DPM series high-pressure dosing machines are designed and developed to process all of polyurethane foam applications. With all in one frame, they are ideal for newcomers and long time users. DPM machines are available in a wide range of models with an output from 120 g/sec to 2500 g/sec at ratio 1:1.

TECHNICAL DATA

DPM	500	1000	1500	2000	2500
Total Flow Rate at MV 1:1	100 g/sec - 500 g/sec	200 g/sec - 1000 g/sec	300 g/sec - 1500 g/sec	400 g/sec - 2000 g/sec	500 g/sec - 2500 g/sec
Raw Material Tank	2 x 250 l	2 x 250 l	2 x 250 l	2 x 250 l	2 x 250 l
Installed Capacity	20 kW	30 kW	40 kW	55 kW	70 kW
Processable Viscosities of the Components	20 - 2.000 mPas	20 - 2.000 mPas	20 - 2.000 mPas	20 - 2.000 mPas	20 - 2.000 mPas
Base Frame Dimensions	2.160 x 1.850 mm	2.160 x 1.850 mm	2.160 x 1.850 mm	2.160 x 1.850 mm	2.160 x 1.850 mm
Total Weight (without liquids)	1.250 kg	1.400 kg	1.550 kg	1.700 kg	2.110 kg
Cable	5x6 mm TTR	5x10 mm TTR	5x16 mm TTR	5x25 mm TTR	5x35 mm TTR
Air (l/min)	8 bar - 500 l	8 bar - 500 l	8 bar - 500 l	8 bar - 500 l	8 bar - 500 l
Oil (Hydraulic Oil 46)	50 l	50 l	50 l	50 l	50 l

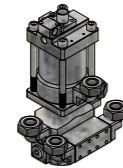
DPM POLYURETHANE TECHNOLOGIES

MIXING HEADS



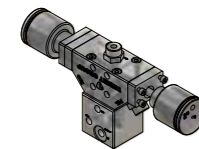
L TYPE MIXING HEAD

DPM technology produced to provide laminated flow in open molds, refrigerator or automotive industries.



I TYPE MIXING HEAD

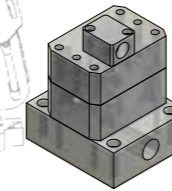
DPM technology that helps the polyurethane to reach all points of the panel, thanks to the I-type head used in discontinuous panel manufacturing.



CONTINUOUS TYPE MIXING HEAD

High-pressure mixing heads for continuous sandwich panel applications

DPM EQUIPMENTS



DPM FLOWMETER

DPM technology with high precision and high pulse feature manufactured for the polyurethane sector.



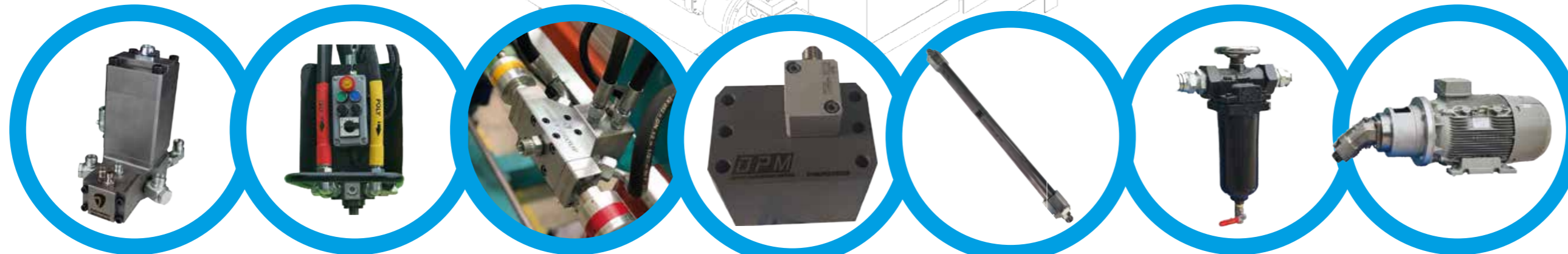
DPM EDGE FILTER (SELF CLEANING)

DPM technology that has a self-cleaning feature, has a handle and motor binding plate on it, and easily cleans the Isocyanate crystals and Polyol threads formed on the surface.



DPM STATIC MIXER

Auxiliary component used in continuous and discontinuous lines. Static mixer is DPM technology used to obtain full-mixed Polyol by perfecting the mixture.

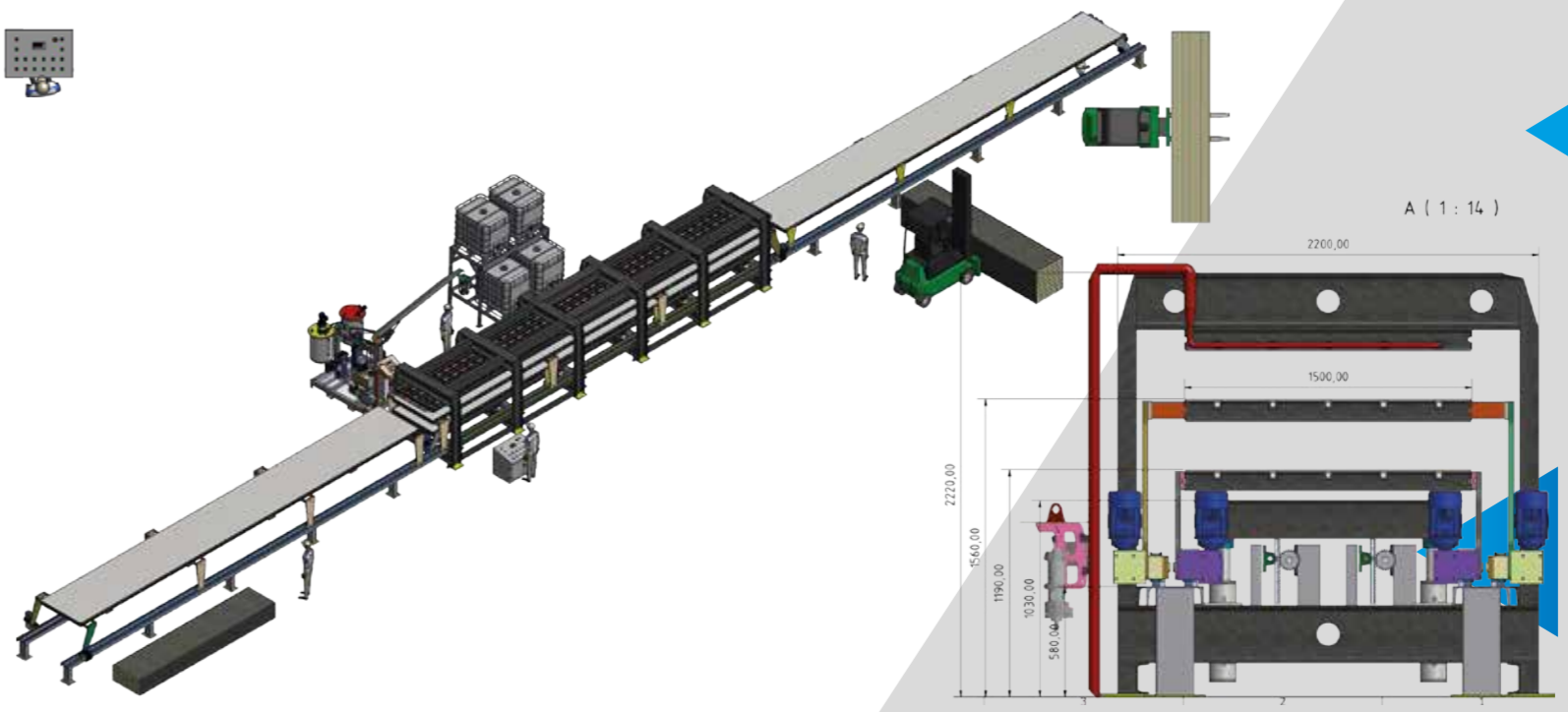
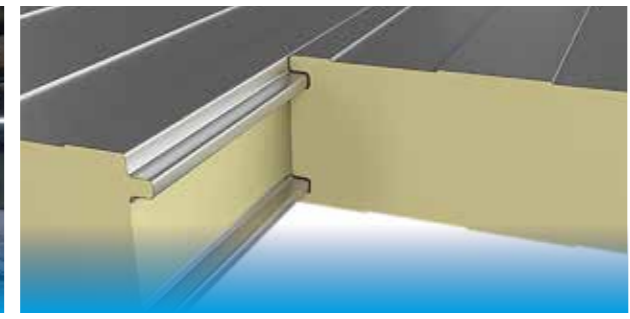
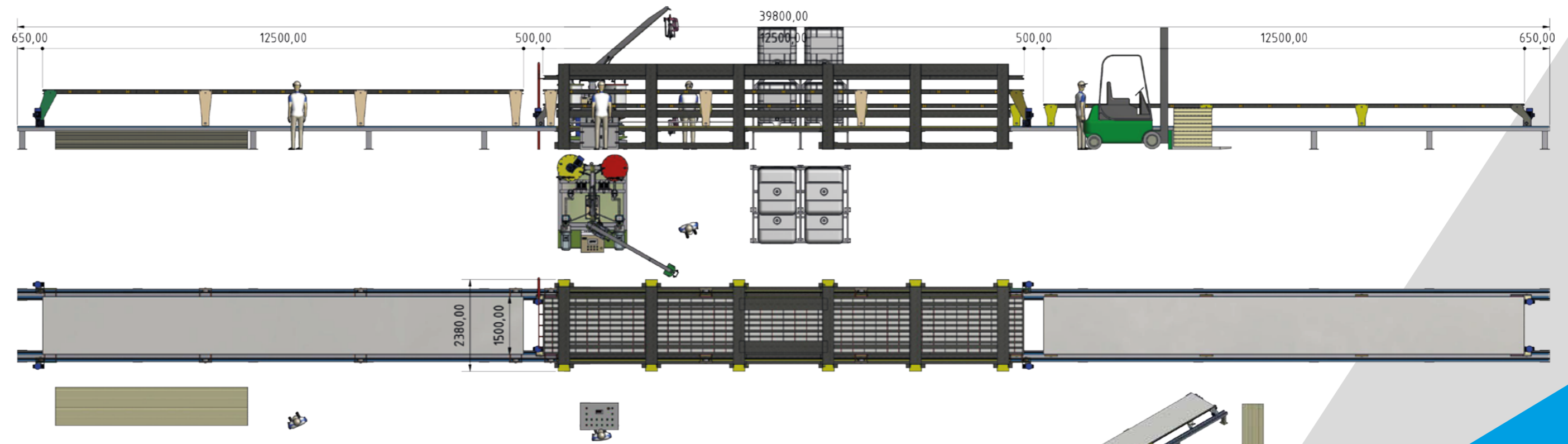


SERIES
DPM 500
DPM 1000
DPM 1500
DPM 2000
DPM 2500

DISCONTINUOUS PANEL PRODUCTION LINE

DDP systems for the manufacturing of discontinuous sandwich elements offer a wide range of dimensions, facings and foam systems. The combination of high quality and reliable hydraulic presses for nearly all applications together with high pressure dosing systems guarantees efficient manufacture of products with an excellent range of properties.

Dmmet Group offers its customers 1+1 and 2+2 shuttle systems.

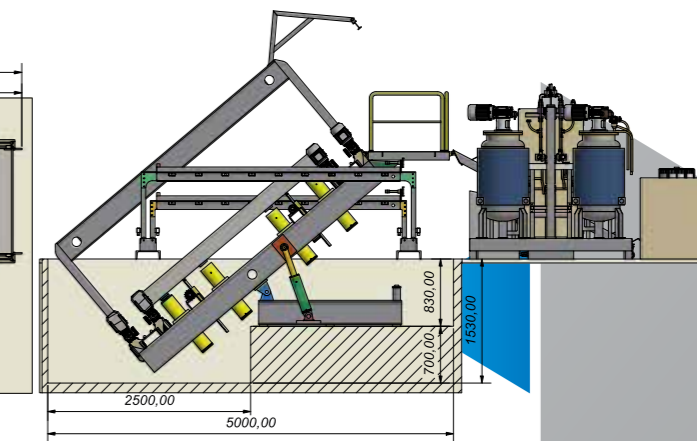
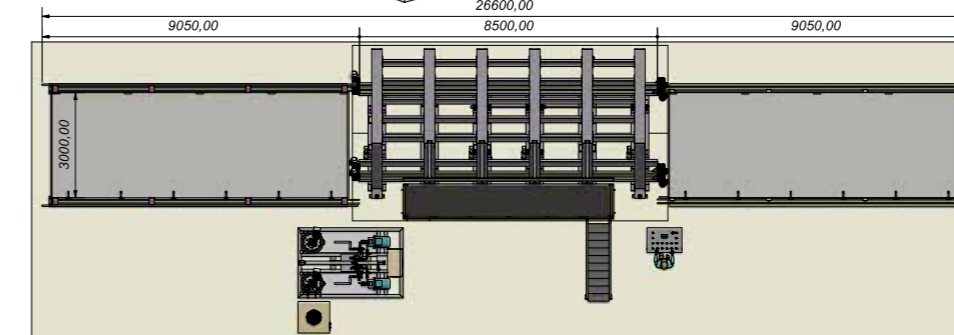
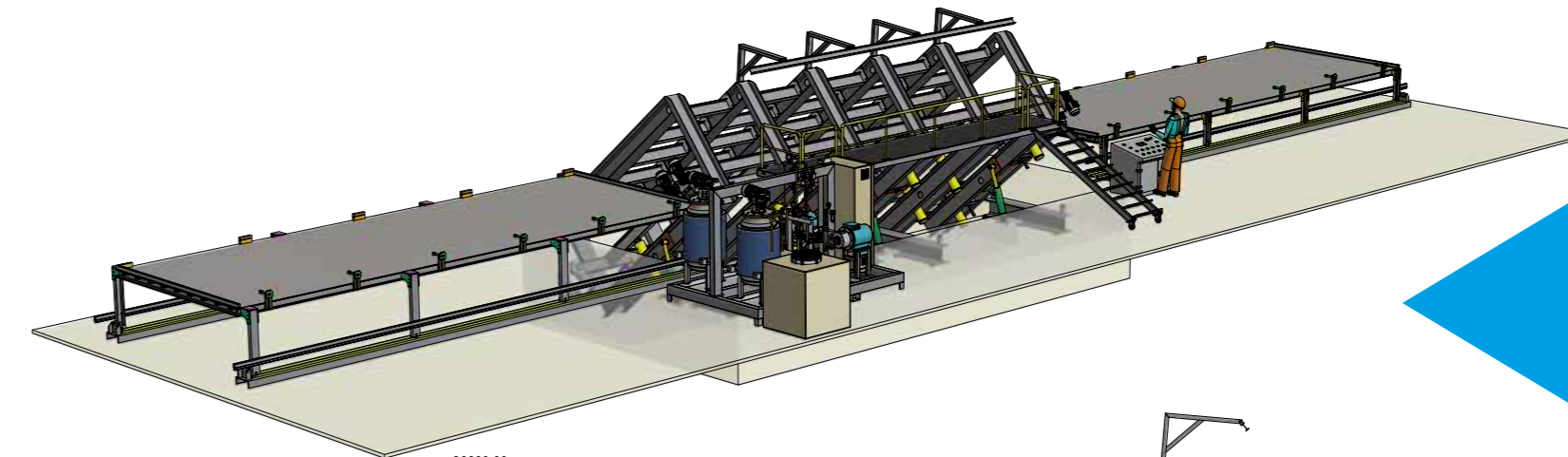


REFRIGERATED TRUCK BODY PANELS PRODUCTION LINE



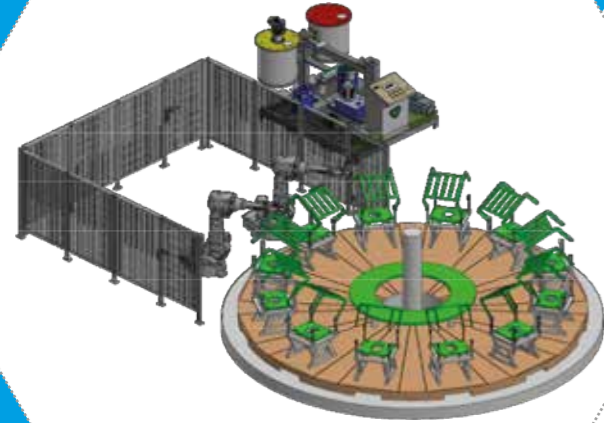
Polyurethane applying machine DPM series is designed for manufacturing of refrigerated truck body sandwich panels. The line can be combined with Discontinuous press.

Adhesive applying machine is made in a form of movable carriage, installed on rails, with a turn able on 45-degree console, where adhesive applying unit is located. The production is completed by pouring the dimensions of the polyurethane machine from the determined points inside the 3000mm x 8500mm press.

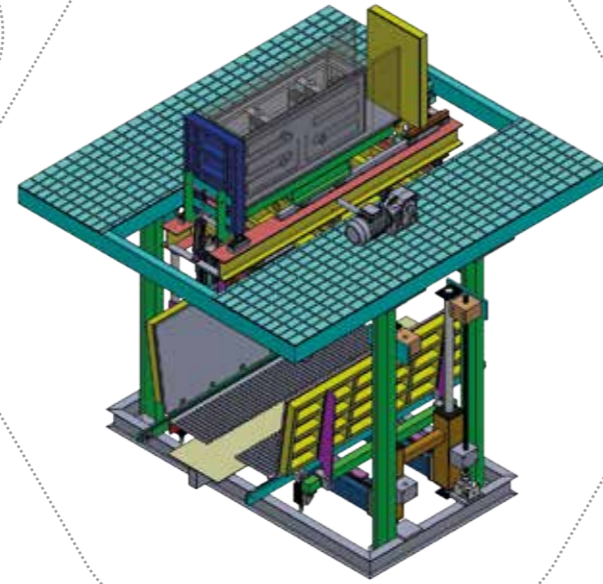


TECHNICAL INSULATION LINES

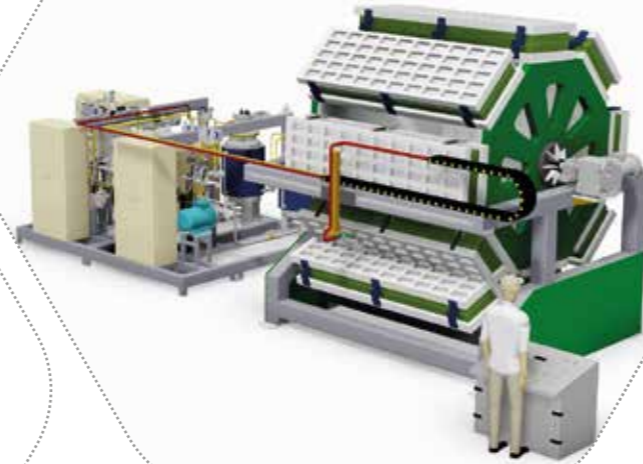
Application areas: Automotive Industry, Refrigerator Equipments, Defense Industry, Agricultural Industry, Construction, Furniture, Textile



Turntable system in which many molds are placed on the turntable and production is provided in a systematic way.



Technological solutions for the production and insulation of refrigerator cabinets



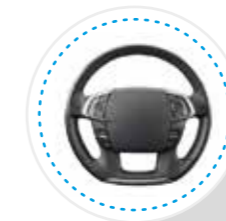
Plant for the automated production of insulated door elements



Solutions for every conceivable polyurethane applications



Machines with up to five components



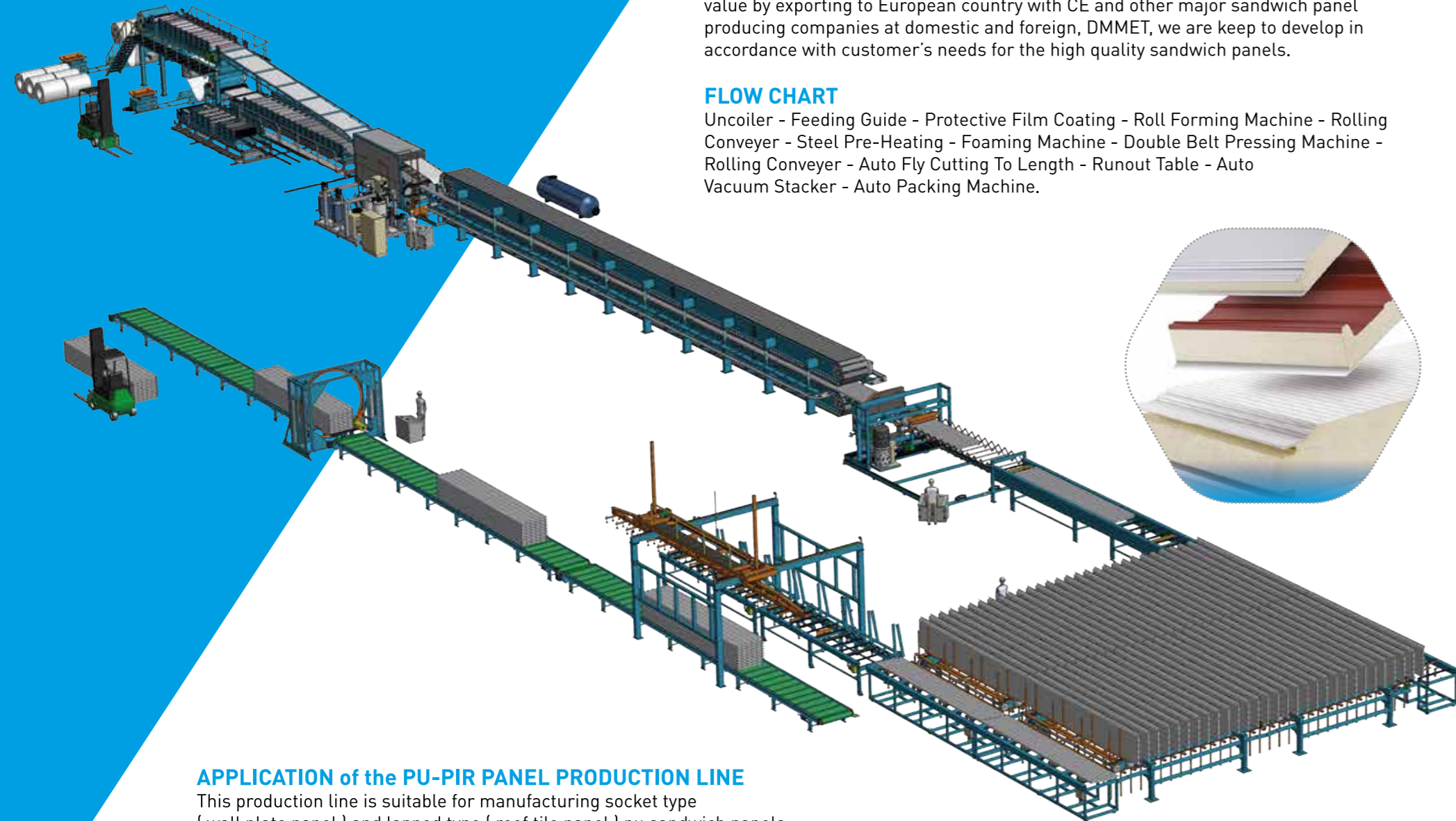
PU - PIR SANDWICH PANEL PRODUCTION LINE

PU-PIR SANDWICH PANEL PRODUCTION LINE

Our continuous PUR / PIR sandwich panel production line is already recognized its value by exporting to European country with CE and other major sandwich panel producing companies at domestic and foreign, DMMET, we are keep to develop in accordance with customer's needs for the high quality sandwich panels.

FLOW CHART

Uncoiler - Feeding Guide - Protective Film Coating - Roll Forming Machine - Rolling Conveyer - Steel Pre-Heating - Foaming Machine - Double Belt Pressing Machine - Rolling Conveyer - Auto Fly Cutting To Length - Runout Table - Auto Vacuum Stacker - Auto Packing Machine.



APPLICATION of the PU-PIR PANEL PRODUCTION LINE

This production line is suitable for manufacturing socket type [wall plate panel] and lapped type [roof tile panel] pu sandwich panels.

Type of Production	Sandwich panels insulated with PU and PIR foam		
Type of Instutaion	Polyurethane		
	Rigid PUR blend - class B2/B3	Foam density	38 ÷ 45 kg/m ³
RIGID Facing Materials	Metarial		Thickness (mm)
	Pre-painted and galvanized steel, pre-coated steel with PVC		0,35 ÷ 0,80



MODEL	Press Lenght	Min-Max Wall Panel Thickness	Min-Max Roof Panel Thickness	Max Production Speed
DMMET 18	18 meter	40 mm - 150 mm	40 mm - 120 mm	8 m / min
DMMET 24	24 meter	40 mm - 180 mm	40 mm - 150 mm	10 m / min
DMMET 30	30 meter	40 mm - 200 mm	40 mm - 200 mm	12 m / min

** ESTIMATED PRODUCTION CAPACITY

(Efficiency 80% - Panel width 1.000 mm)

Panel Thickness	Line Speed (m/min)	Production (m/shift)
40	12,0	4,320
60	8,0	2.880
80	7,0	2.520
100	6,0	1.800

**Standard components

PLC and Operator Panels : SIEMENS

3-phase electric motors : ABB - GAMAK

Inverter : ABB - SIEMENS

Contactors, relays : SIEMENS, Allen Bradley

Selector switches, Lamps, push-buttons : SIEMENS

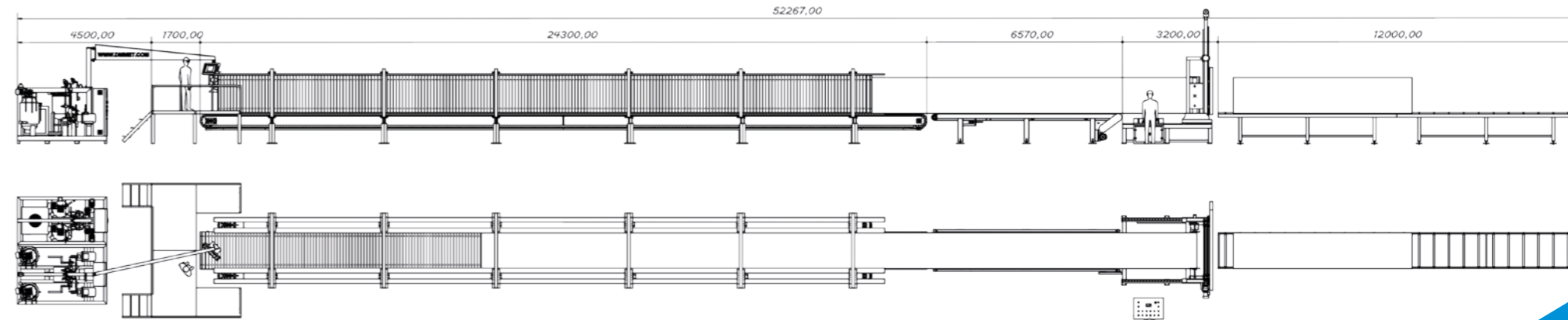
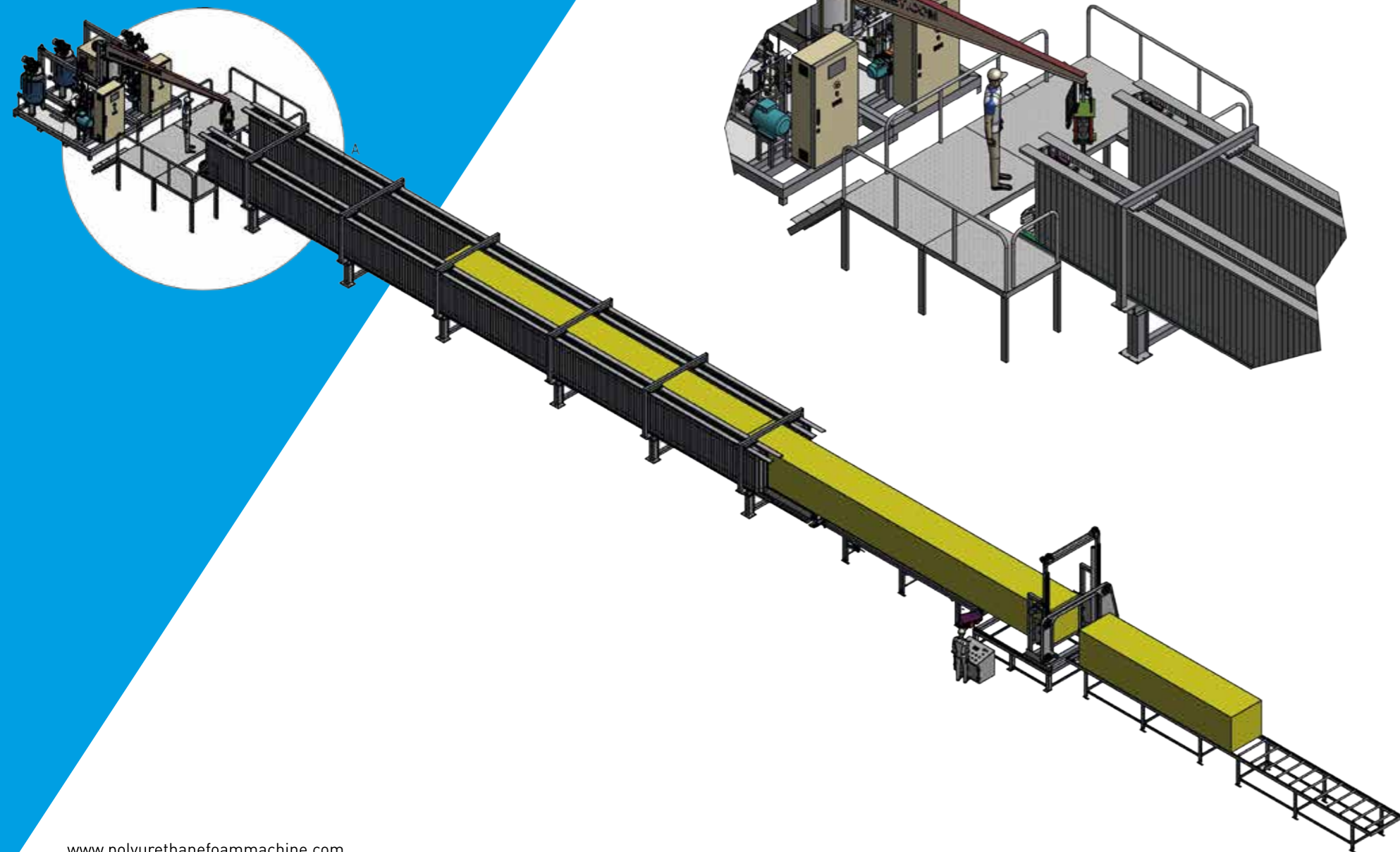
Pneumatic components : Festo - Winman

The above listed Production capacities refers to ideal working constructions with theoretical standard chemicals and can be subject to modification according to the raw material overall quality, the chosen chemical system, the foam density, the dosing machine pumps flow rate and the maintenance status of the plant. Production capacity calculated considering 7.5 h/shift



DMMET GROUP®

POLYURETHANE FOAM CONTINUOUS SLABSTOCK LINES



The combination of perfect high-pressure dosing and an efficient stirrer mixer makes Dmmet Group continuous slabstock lines the perfect solution in the efficient processing of all commercial materials in almost all density ranges. Dmmet Group continuous slabstock lines are opening up a variety of prospects for the cost-effective manufacture of high-quality foams of any length, up to 2000 mm in width and, depending on the foam type and specific density, with a height of up to 1500 mm.





DMMET GROUP®

the new world leader in the industry

PU-PIR Sandwich Panel Production Line

Discontinuous Panel Production Line

Polyurethane Foam Machine

Trapezoidal Sheet Roll Forming Machine

Metal Tile Roof Roll Forming Machine

Cut to Length Line / Slitting Line

Flexible U-C Purlin Machine

SANDWICH PANEL
PRODUCTION LINE

DÖNEM MAKİNA®

ADVANCED
POLYURETHANE MACHINE

dmmetas®
Teknoloji İthalat İhracat Anonim Şirketi

DMIMET®
engineering



METPUR



OTOPUR

FACTORY 1

Sarımeşe Mah. Nazım Demirci Cad. No:368
Kartepe - KOCAELİ / TURKEY
Phone : +90 262 373 4004
E-mail : info@dmmet.com

FACTORY 2

Çepni Mah. Kiremithan Sok. No:21
Kartepe - KOCAELİ / TURKEY
Phone : +90 262 373 4004
E-mail : info@dmmet.com

FACTORY 3

Sarımeşe Mah. İcadiye Cad. No:3
Kartepe - KOCAELİ / TURKEY
Phone : +90 262 373 4004
E-mail : info@dmmet.com

▶ www.dmmet.com

▶ www.dmmetgroup.com

▶ www.sandwichpanelline.com

▶ www.polyurethanefoammachine.com



/sandwichpanelmachine
/polyurethanefoammachine